

STINGER®

CS58 CAP STAPLER OWNER'S MANUAL

- *Operation*
- *Maintenance*
- *Safety*
- *Warranty*



www.stingerworld.com



PLEASE READ!

This manual contains important information about product safety.

REV 06/15

WELCOME TO STINGER

Congratulations on purchasing the **STINGER CS58** Cap Stapler. You have selected a brand and a tool that you can count on to deliver best practice installation, and perform job after job.

Please take the time to read and understand the information contained in this Owner's Manual before operating or maintaining the **STINGER CS58** Cap Stapler.

The **CS58** is intended for securing housewrap and roofing felt only.

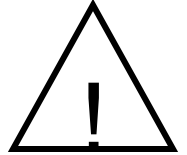
Improper use of the **CS58** could result in serious injury or even death. Most accidents occur because of the failure to observe basic safety rules and precautions, which are outlined in the "Important Information" section of this manual.

This Owner's Manual should be available to anyone who plans to operate the **CS58**.

TABLE OF CONTENTS

- Important Information 1
- Tool Specifications 4
- Loading the Tool 5
- Operating the Tool 6
- **STINGER CS58** Schematic 8
- **STINGER CS58** Parts List 9
- Maintenance and Storage 10
- Warranty 11
- Troubleshooting 12

IMPORTANT INFORMATION



PERSONAL SAFETY ITEMS

- Do not use tool prior to reading the Owner's Manual.
- Always wear eye protection that conforms to ANSI requirements (Z87.1) and provides protection against flying particles both from the front and side. Eye protection should be worn by the operator and by others in the work area. Eye protection is required to protect against flying fasteners and debris that could possibly cause severe eye injury.
- The employer is responsible to enforce the use of eye protection equipment by the tool operator and all other personnel in the work area.
- To prevent accidental injuries:
 - Handle the tool with care
 - Always assume that the tool contains fasteners
 - Always disconnect the air hose from the **STINGER CS58** when:
 - loading staples and/or caps
 - performing inspection, maintenance or repair
 - clearing a staple or collated cap jam
 - the tool is not in use
 - leaving the work area
 - moving the **STINGER CS58** to another work location
 - handing the **STINGER CS58** to another person
 - storing the tool
 - Never point the tool toward yourself or anyone else
 - Never engage in horseplay
 - Never hold or carry the tool with a finger on the trigger
 - Never place a hand or any other part of the body in the fastener discharge area of the tool while the air supply is connected



IMPORTANT INFORMATION

AIR SUPPLY AND CONNECTIONS

- Use only clean, regulated compressed air as a power source for this tool. Do not use bottle gases, combustible gases or oxygen as a power source for the tool as the tool may explode.
- Do not use air supply pressures that exceed 95 PSI.
- Do not exceed the recommended maximum operating air pressure as tool wear will be greatly increased. The air supply must be capable of maintaining the operating air pressure of the tool. Pressure drops in the air supply can reduce the tool's driving power.
- Use a pressure regulator and gauge to allow visual inspection of the air pressure being delivered to the tool.
- Use air hoses that have rated pressures of up to 150% of the maximum pressure that can be generated by the power source. The supply hose should contain fittings that will provide quick disconnecting from the male plug on the tool.
- Use quick connect fittings that allow the tool to be unhooked from the air supply quickly and easily.
- Do not use fittings that will not allow the tool to exhaust when the air supply is disconnected.

IMPORTANT INFORMATION

OPERATION OF THE TOOL

- Never inspect, maintain, repair, adjust, clear a jam or store the tool with the air connected.
- Never use the tool in proximity of flammable gases or liquids, as some tools will create sparks that can be an ignition source for a fire or explosion.
- Always inspect the safety device for damage and proper operation, prior to operation.
- Never assume the tool is empty of fasteners.
- Never point the tool toward yourself or any other persons.
- Never cycle the tool unless it is in contact with the work-piece.
- Never use the tool as a hammer or wedging device or drop to the floor from any height.
- Always remove your finger from the trigger when pausing from cycling.
- Never tamper with the safety device or use the tool if the safety device is not functioning properly.
- Use only **5/8" STINGER StaplePac®** cap fasteners with the **STINGER CS58** Cap Stapler. Never use any fasteners that are not specified for use in this tool. The CS58 holds 1 coil of plastic caps (200 caps) and 2 strips of staples (100 staples each).

TOOL SPECIFICATIONS

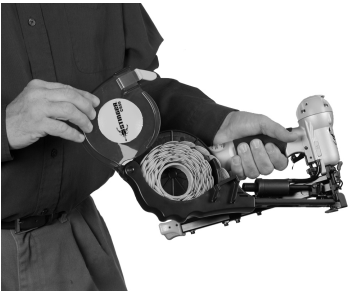
Operating pressure	90-95 psi
Weight	3.9 lb.
Nail capacity	200 staples (2-100 count strips)
Cap capacity	200 plastic collated caps (1 reel)
Air inlet	1/4"
Fasteners	STINGER StaplePac® (National Nail product number 0136360) Consists of 20 strips of 5/8" 20 gauge staples (100 staples per strip) and 10 reels of 1" diameter plastic collated caps (200 caps per reel).

LOADING THE TOOL

USE 5/8" STINGER STAPLEPAC® CAP STAPLES ONLY



- Disconnect air.



- Open the magazine cover by pushing the green cover release tab and lifting.



- Place cap reel in basket. Make sure the front end of the cap coil is placed over the cap guide area of the basket. Insert lead cap into the feed chute.



- Slide caps along the feed chute with fingers until they engage the cap feeder. Pull the cap feeder back and release to advance caps until the first cap is under the nose of the tool.

- Close the magazine cover.

- Depress the latch on the staple follower and pull back. Insert two staple strips. Slide staple follower in and secure.

- Plug into air source. Tool is ready to use.

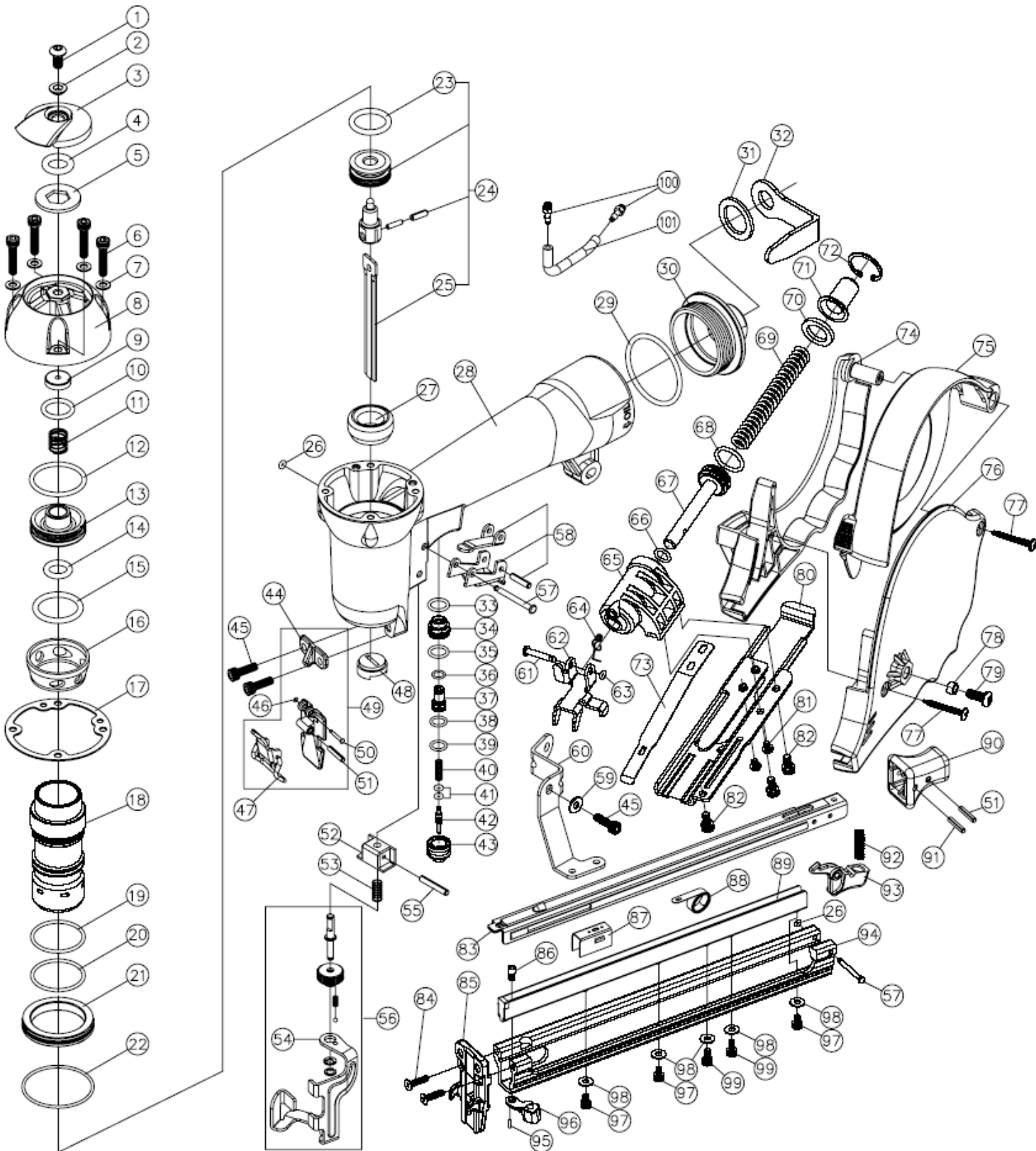
OPERATING THE TOOL

1. Do not use tool prior to reading the Owner's Manual.
2. Read warning label(s) on the tool.
3. Visually inspect the tool for worn or damaged parts.
4. Wear appropriate eye and ear protection.
5. Install a male pneumatic fitting into the end cap of the tool, ensuring that the fitting allows the tool to exhaust any air in the tool when the air hose is disconnected.
6. Add 2 drops of non-detergent, 20-weight oil into the male fitting.
7. Connect the air hose using a quick connect fitting to the tool, and check the air pressure reading on the regulator to ensure it does not exceed 95 PSI. Check the tool for any air leaks.
8. Place the tool, empty of fasteners, in operating position on a scrap work piece. Fully depress the safety and pull the trigger to verify that the tool cycles.
9. Disconnect the air hose from the tool when:
 - Loading staples and/or caps
 - Performing inspection, maintenance or repair
 - Clearing a staple or collated cap jam
 - The tool is not in use
 - Leaving the work area
 - Moving the tool to another work location
 - Handing the **STINGER CS58** to another person
 - Storing the tool
10. Following recommended loading instructions, load the fasteners approved for use in the tool.

OPERATING THE TOOL

11. Cycle the tool on a scrap work piece to evaluate the depth of penetration by the fastener into the work piece.
12. To adjust the depth of penetration, regulate the air pressure at the regulator and/or disconnect the air hose, adjust the depth control screw, connect the air hose and cycle the tool on a scrap work piece to evaluate the adjustment.
13. Repeat Step 12 as needed to set the correct depth, using the minimum amount of air pressure to drive the fastener.

STINGER CS58 SCHEMATIC



STINGER CS58 PARTS LIST

Ref. No.	Item No.	Description	Ref. No.	Item No.	Description
	01	0136665 SCREW		52	0135897 SAFETY FOOT GUIDE
	02	0135851 WASHER		53	0136658 SPRING
	03	0135951 EXHAUST DEFLECTOR		54	0135899 SAFETY
	04	0135853 O-RING		55	0136653 PIN
	05	0135854 WASHER		56	0135945 SAFETY ASSEMBLY
	06	0135855 CAP SCREW		57	0136623 STEP PIN (2)
	07	0135856 FLAT WASHER		58	0135946 TRIGGER ASSEMBLY
	08	0135857 CAP		59	0136611 WASHER
*	09	0136627 EXHAUST SEAL		60	0135906 BRACKET
*	10	0136628 O-RING		61	0135907 PIN
	11	0136630 POPPET SPRING		62	0135908 CAP FEEDER
*	12	0135861 POPPET O-RING	*	63	0135901 O-RING
	13	0135862 POPPET		64	0137911 SPRING
*	14	0135863 PISTON STOP O-RING		65	0135910 FEED CYLINDER
*	15	0135864 CYLINDER SEAL O-RING	*	66	0135911 O-RING
	16	0135865 CYLINDER SPACER		67	0135912 FEED PISTON
*	17	0135866 GASKET	*	68	0135913 O-RING
	18	0135867 CYLINDER		69	0135914 SPRING
*	19	0135900 O-RING		70	0135915 PISTON STOP
*	20	0135868 CYLINDER O-RING		71	0135916 FEED PISTON COVER
	21	0135869 CYLINDER GUIDE		72	0135917 RETAINING RING
*	22	0135870 O-RING		73	0135918 HOLD DOWN SPRING
*	23	0135871 PISTON O-RING		74	0135919 MAGAZINE RIGHT
	24	0135943 PISTON & DRIVER ASSEMBLY		75	0135920 MAGAZINE COVER
	25	0135872 DRIVER BLADE		76	0135921 MAGAZINE LEFT
*	26	0136621 O-RING		77	0135922 SCREW
	27	0135874 BUMPER		78	0135923 NUT
	28	0135875 BODY		79	0135924 SCREW
	29	0136664 O-RING		80	0135925 FEED CHUTE
	30	0135877 END CAP		81	0135926 SCREW
	31	0135947 WASHER		82	0136608 SCREW
	32	0135948 BELT CLIP		83	0135928 MAGAZINE COVER
	33	0135878 O-RING		84	0135929 SCREW
	34	0135879 TRIGGER VALVE (A)		85	0135930 WEAR PLATE
*	35	0135880 O-RING		86	0135931 SCREW
*	36	0135881 O-RING		87	0135932 PUSHER
	37	0135882 Trigger Valve (B)		88	0135933 NEGATOR SPRING
*	38	0135883 O-RING		89	0135949 TRACK
*	39	0135884 O-RING		90	0135934 LATCH COVER
	40	0135885 SPRING		91	0135935 PIN
*	41	0135886 O-RING (2)		92	0135936 SPRING
	42	0135887 PLUNGER		93	0135937 LATCH
	43	0135888 TRIGGER VALVE HOUSING		94	0135938 MAGAZINE
	44	0135892 STATIONARY FRONT PLATE		95	0135950 PIN
	45	0135891 SCREW		96	0135939 FEED CHUTE BRACKET
*	46	0135893 O-RING		97	0135940 SCREW
	47	0135896 LATCH ASSEMBLY		98	0135941 WASHER
*	48	0135890 RETURN SEAL		99	0135942 SCREW
	49	0135944 FRONT PLATE ASSEMBLY		100	0136645 BARB FITTING (2)
	50	0136654 PIN		101	0135904 TUBING
	51	0135895 PIN			

♦ Parts included in 135952 O-Ring and Seal Kit

MAINTANANCE & STORAGE

MAINTENANCE

1. Disconnect the air hose from the tool when performing inspections, maintenance or repairs.
2. Use air line lubricators. If lubricators are not available, or if hose lengths exceed 10 feet, add 2 drops of non-detergent 20-weight oil daily into the air inlet of the tool.
3. Whenever repairs or replacement of parts inside the body occur, check the piston “O” ring for adequate grease lubrication.
4. Never use any parts other than genuine **STINGER** replacement parts.
5. Periodically clean the magazine and nose of the tool with a mild solvent.

STORAGE

1. Disconnect the air hose when storing the tool.
2. Never store the tool in cold weather environments for any duration of time as any frost or ice formation in the tool will cause tool failures.
3. For prolonged storage, add 2 drops of oil to the air inlet of the tool prior to discontinuing use. Also clean the exterior of the tool with a mild solvent.

WARRANTY

WARRANTY ITEMS

1. Warranty for cap assemblies, castings and housing castings is one year.
2. Warranty for bumpers, “O” rings, driver blades and piston rings is not applicable as they are normal wearing parts whose life is dependant on application.
3. Warranty for all other parts is 90 days.

WARRANTY CONDITIONS

1. The beginning date in which the warranty is in force is the date of purchase.
2. The warranty is not transferable.
3. The warranty is voided by any of the following:
 - a. Abuse, misuse, or damage to the tool
 - b. Use of parts other than genuine STINGER parts
 - c. Use of fasteners not designated for use in the tool
 - d. Modifications to the tool that alter the original function or intent of use of the tool by anyone other than National Nail
4. National Nail retains the right to replace or repair any warranty items it deems necessary.

TROUBLESHOOTING

Disconnect the air hose from the tool when performing inspections, maintenance or repairs.

PROBLEM:

CORRECTION:

- | | |
|---|---|
| 1. Tool operates, but no fasteners are driven. | <ul style="list-style-type: none">• Check magazine for proper fasteners. Fasteners should slide freely in and out of the magazine. |
| 2. Cap leaks air. | <ul style="list-style-type: none">• Tighten cap screws. |
| 3. Fasteners jam in nose of tool. | <ul style="list-style-type: none">• Remove fasteners from magazine.• Open Quick-Clear™ nose (if applicable), remove jammed fastener and close latch.• Load tool. |
| 4. Weak drive | <ul style="list-style-type: none">• Check to make sure there is adequate air supply. |
| 5. Skipping fasteners | <ul style="list-style-type: none">• Replace bumper if worn.• Use only recommended fastener sizes.• Replace magazine if worn.• Check air supply as it may be too low. |
| 6. Fasteners will not drive completely into work piece. | <ul style="list-style-type: none">• Increase air pressure (do not exceed 120 PSI). |

Please contact Inside Sales for technical support if you have any other problems: 800-746-5659

Contact Inside Sales at
800-746-5659
to place an order for
replacement parts.

Visit our website at
www.stingerworld.com
to learn more about our products
and services.



2964 Clydon SW, Grand Rapids MI 49519, USA
Phone: 800-968-6245 Fax: 616-531-5970

